

DO YOU TRUST YOUR COUNCIL?

BATHNES have signed you up to a SMART CITY trial.

Did you consent to this?



HEALTH

There are already established health effects from 2G, 3G, 4G.

Untested higher frequencies are predicted to cause further health damage. Why take the risk?



PRIVACY

Facial recognition will track your moves. Your data will continue to be sold without your knowledge or consent.



WILDLIFE

Wireless radiation "safety" limits for trees, plants, birds and bees do not exist. The delicate balance of our Earth's biodiversity is at risk.

No bees = no food.

GET INFORMED



FREEDOMS

The WEF intend full control over your body, movements and finances via 15 minute smart cities, a central bank digital currency & carbon allowances.



ENVIRONMENT

A 5G base station is approx. 3 times more power hungry than 4G. 5G is not sustainable, 5G is not green.



NEGLIGENCE

The trial is costing the tax payer £770,000. When people are struggling to put food on the table, is this money well spent?

JOIN THE RALLY FOR SANITY

WHY?

- In order to justify the trial, BATHNES have claimed that the majority of residents want it. Without adequate risk assessment, how can we make an informed decision?
- You deserve to have your voice heard
- It's your money that is paying for it
- Risk is undefined: you, your family & your friends are the guinea pigs
- We are seeing the damages of recent untested interventions. Let's not make the same mistake again

WHEN & WHERE

Sunday July 7th 2pm
The Guildhall BATHNES
council building
15 High St. Bath, BA1 5AW
Meet outside



How do you feel about being signed up to an 18 month trial with a network of 16-30 untested 5G beam formed radiation emitting small cells and antenna, spread across the city?



YOUR OPINION MATTERS. Email: development_management@bathnes.gov.uk and [cc in paul_roper@bathnes.gov.uk](mailto:cc_in_paul_roper@bathnes.gov.uk) and samantha_mason@bathnes.gov.uk



RFR EXPOSURE

Wifi shares the same carcinogenic status as other forms of RFR under the IARC classification and is also “an important threat to human health” in numerous ways. Disability and compensation cases for those with Electrohypersensitivity (EHS) are already being won.

RFR health effects include:

- headaches
- sleep disturbances & insomnia
- tinnitus
- dizziness
- nausea
- irritability
- decreased fertility
- fatigue & lack of energy
- depression & anxiety



Fig 3 – Photo of the radio

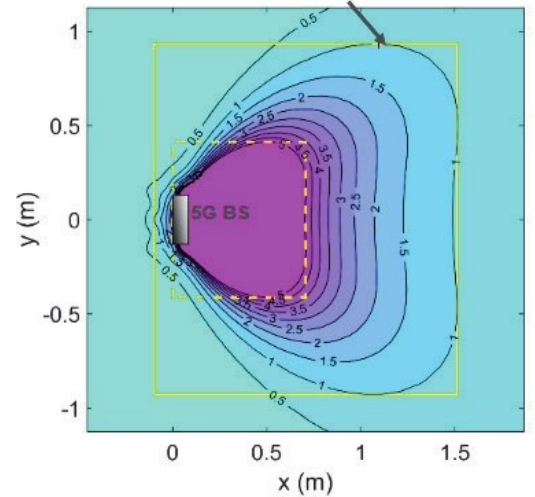
TRIAL EXPOSURE

BATHNES Council and the government withhold power and frequency information. Why?

The government have adopted inadequate exposure guidelines from the International Commission on Non-Ionising Radiation Protection (ICNIRP). Science indicates they are not protective of children and vulnerable people. Telecoms companies issue certificates of compliance with ICNIRP. 100’s are invalid - ‘Three UK Ltd’ are not registered on companies house. If injury results, who is liable?

BATHNES were informed about a ‘hotspot’ at a local primary school in 2019, which once remedied stopped the children’s nausea and headaches. They are not testing or risk assessing for any hotspots in this trial, despite the increase in RF emitting devices.

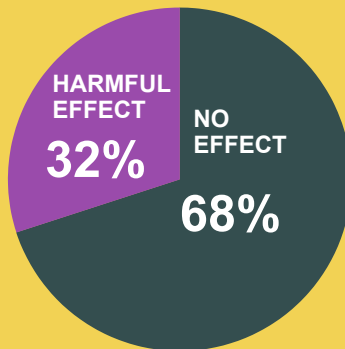
Exclusion zone, 10 W/m² (ICNIRP power density limit for the general public)



BATHNES are denying our right to be protected & have abandoned public consultation. Both are unlawful.

RF Research - does funding matter?

INDUSTRY STUDIES:



NON-INDUSTRY STUDIES:



Data compiled by Dr Henry Lai for the University of Washington

DO YOU HAVE A PACEMAKER OR METAL IMPLANT?

In April 2024, Cardiff Administrative Court ruled it is unlawful not to take into account the effect on those with pacemakers and metal implants.